



**SAP programming &
development**

BTech Sp. z o. o.

START

Company

- We are a team of experienced consultants and developers specializing in the implementation and development of the SAP system.
- We use SAP tools and technologies on a daily basis and work in teams that use reliable project management methodologies, such as: Accelerated SAP, PRINCE2, Agile and SCRUM.
- Our competences include tools & solutions like: SAP ABAP, ERP/Netweaver/Hana/S4Hana, Fiori, WebDynpro oraz BSP, SAP PI/XI/PO, SAP ALE/iDoc, EDI, SAP Workflow, SAP BW/BI.

Facts & Figures 1

Date of foundation:	2007
Number of Employees:	30
Number of customers:	50+
Number of projects:	100+

Countries where we worked so far and our customers come from:	Poland, Germany, Switzerland, Luxemburg, Austria, USA, Netherlands, France, Norway.
--	--



Facts & Figures 2

Junior ABAP/FIORI/PO Developers:	4
Regular ABAP/FIORI/PO Developers:	12
Senior ABAP/FIORI/PO Developers:	10
SAP Technical Consultants:	4

Availability depends on current project workload and must be subject of further verification.



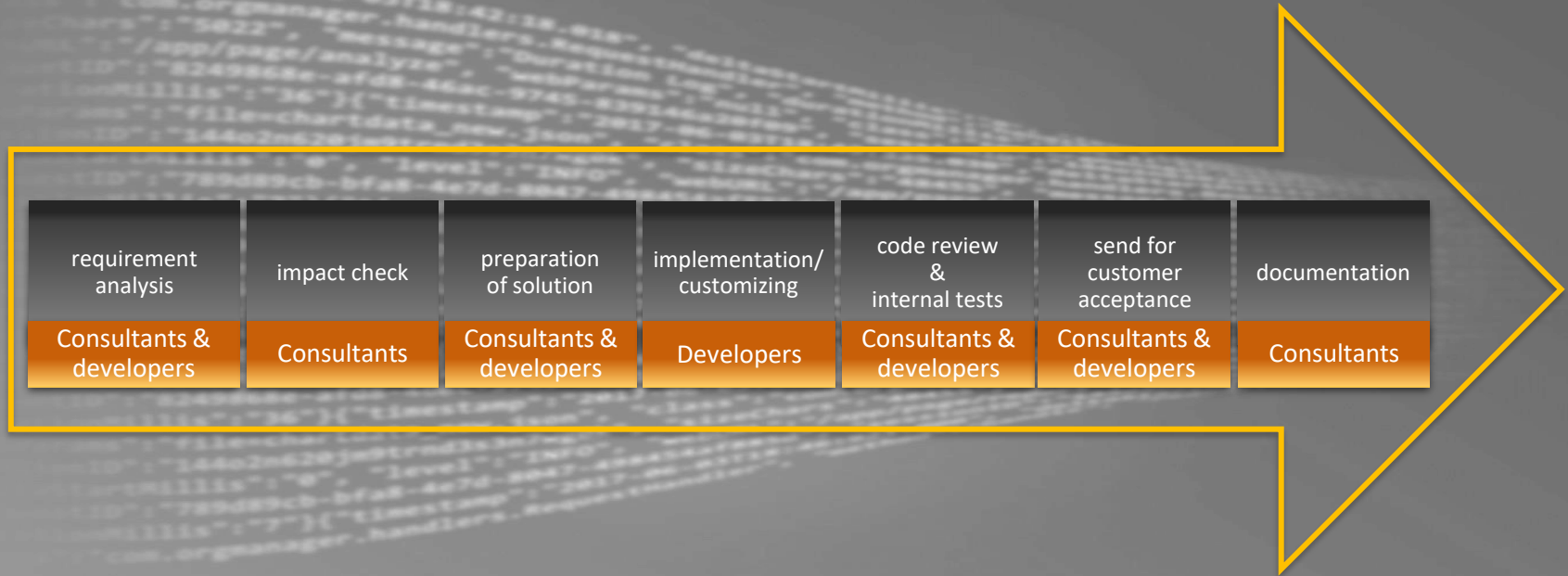
How do we work

Customers appreciate our team since we:

- Keep our word when it comes to quality, deadlines and budget
- Work in teams using various project methodologies: Accelerated SAP, PRINCE2, SCRUM, and other.
- Use clear billing methods
- Let our customers influence the shape of the team fulfilling an order
- Enable full control of work progress at all stages of the project.

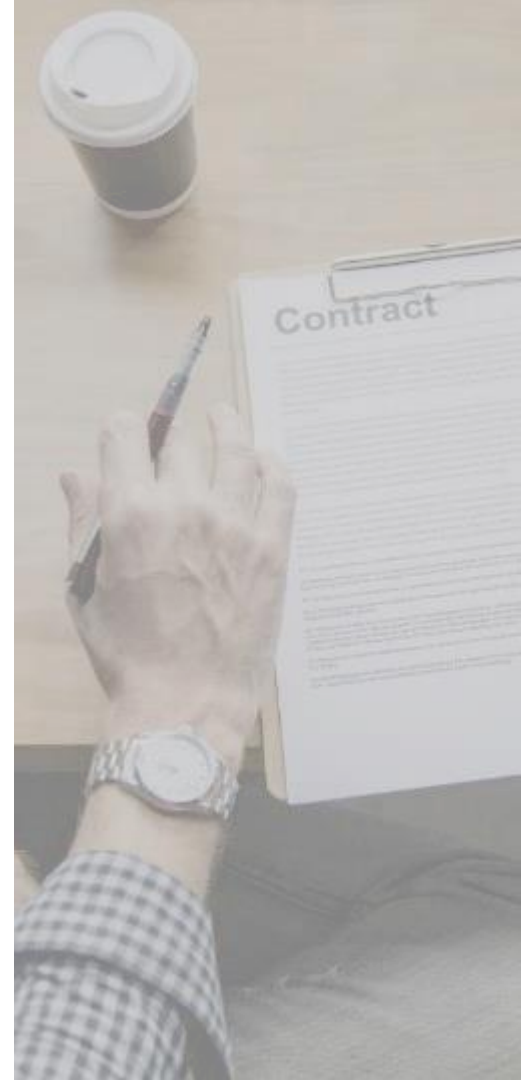


Software production process in brief



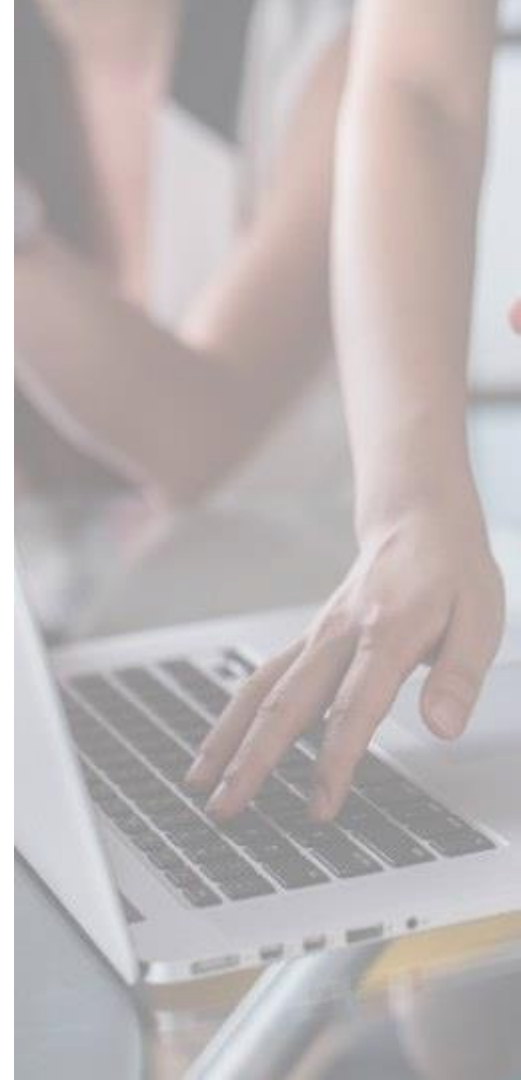
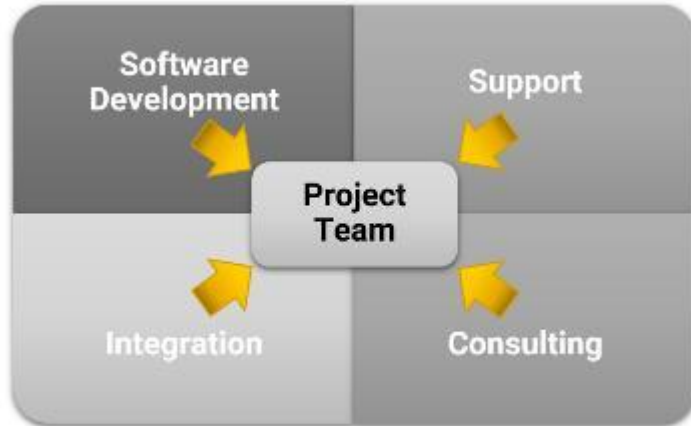
Why BTech

- Over a dozen years of experience in the development of SAP systems
- High flexibility, creativity, initiative in creating solutions
- Support & Management of the full project cycle:
 - analysis,
 - defining and reorganizing processes,
 - configuration,
 - extensions (custom dev.)
 - testing,
 - documentation,
 - user training (key Users)
- Caring for the quality of solutions:
 - code review,
 - performance analysis
 - current Z-extension analysis
 - testing
 - Incident tracking with use of dedicated software (e.g. BugZilla, Jira, ServiceNow, etc.)



Workforce organization

Depending on project requirement: Development Team, Integration team, Support Team, Consulting Team, Matrix:



Range of services



Software development

- Creating and modifying business processes (SAP Workflow)
- Creating and developing a data warehouse using SAP Business Warehouse
- Developing and implementing reports and forms for SAP Script, smartforms, SAP Adobe Forms printouts
- Designing and implementing dialog programs
- Modifying existing transactions and creating new ones
- Programming activities during migration to SAP S/4Hana
- UI5/Fiori: Designing applications based on user roles in the organization
- Exchanging data and interfaces with other systems using SAP XI/PI/PO and via SAP EDI/Idoc
- Programming in modules, such as SD, MM, WM, FI/CO, TR, PP, QM, PM, PS, and HR
- Other programming services using the ABAP programming language.



System integration

Our team has been implementing such projects for many years and we are able to design and develop optimal solutions in terms of cost, performance and scalability that will ensure seamless communication of all of your company's systems. In projects of this type, we use such tools and technologies as:

- SAP PI/XI/PO, ABAP Proxy
- SAP Business Warehouse
- SAP Business Connector
- RFC, IDoc, BAPI, EDI/ALE
- WebService/SOAP
- SAP Fiori/UI5

Consulting services

Our team can also provide consulting and support services for SAP users supporting management of such areas as:

- Finance and Controlling (FI/CO)
- Sales and Distribution (SD)
- Production Planning (PP)
- Materials Management (MM)
- Adapting the system to changes in legal regulations



Contact

BTech Sp. z o. o.

ul. Legnicka 57D lok. B/A
54-203 Wrocław, Poland

Tel.: +48 71 734 50 00

Email: biuro@btech.pl

www.btech.pl

